

SEP-11-1884

ASSISTANTS

N. Montgomery
Rob. VAN DYKE
SAM DRYSDALE
TMS. WALLACE

N 29° 02' E

BEN LO

SANDSTONE

309

NO 84

SEE ALSO PAGE 61
S 59-13 E
OBS. PK.

N 54-32 1/2 E
S. gable N. gable
Mfg. house

Reference →

July 5-1910

14	S 30° E
S. E 42.8 pole	S 30° 00' E
S. W 42.14 fence cor.	S 48-24 W
N. W 74.44 pole	N 61-30 W
55 N. E 100.6	S. E. cor. Brick Res.
S. E 37.24	Cor. Post. S 60° 25' E
S 44° 49' E	984.25 to Mut No 86.

See Book G page 6.

Slatersville

NO 83

SANDSTONE

283 + 31

N 28° 10' E
BEN LO.

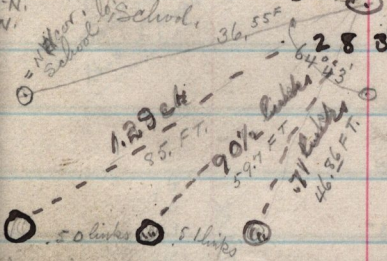
N 79° 13' E
D.G. PK.

S 61-07 1/2 E
OBS. PK.

Measure March 10-1893



1. Cor. S 54° 08' W
2. Sec. 11 825.8
3. N. School
4. W. School



Box elder trees
placed N of S in front
of School house
at Slatersville